

4001 is known as: 4001 USA

4001 USA bulb specifications:

category: **SEALED BEAM**

volt: **12.8**

amp: **2.93**

watt: **37.5**

base: **2 Contact Lugs**

glass: **PAR46**

m.o.l.: **4.12** inch (104MM)

4001 USA also known as

4001

4001 EIKO

4001 GENERAL-ELECTRIC

4001 USA

18516

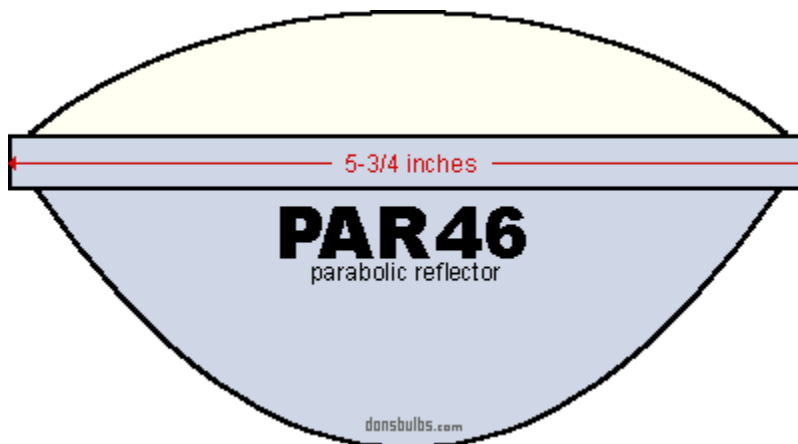
031293460011 EIKO

4001 USA have been found in equipment:

Nash

1956-12-VOLT HEADLAMP Automobile

1957-12-VOLT HEADLAMP Automobile



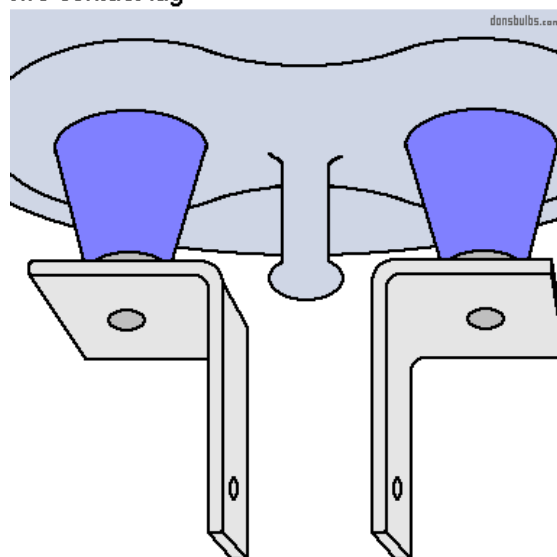
typical shape of PAR46 glass envelopes (not to scale)

2CL

2 contact lug

two contact lug

A38



industry standards for base: **2 Contact Lugs** (not to scale)